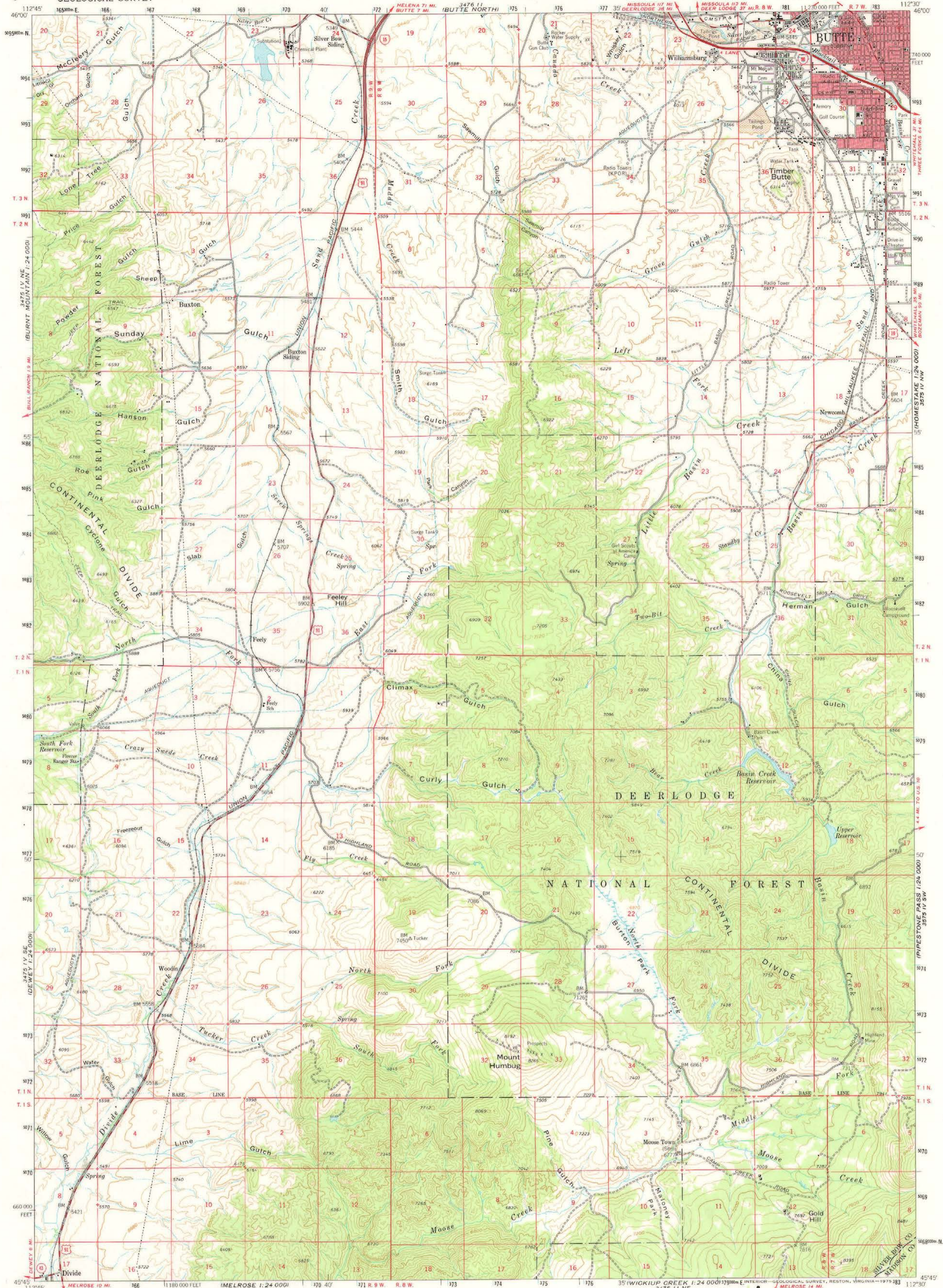
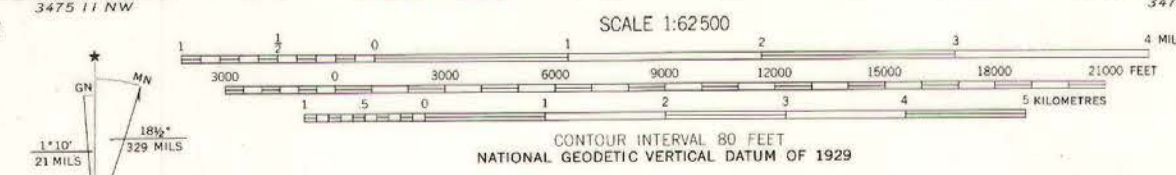


UNITED STATES
DEPARTMENT OF THE INTERIOR
GEOLOGICAL SURVEY

BUTTE SOUTH QUADRANGLE
MONTANA
15 MINUTE SERIES (TOPOGRAPHIC)



Mapped, edited, and published by the Geological Survey
Control by USGS and USCGS
Topography by photogrammetric methods from aerial photographs taken 1956. Field checked 1961.
Polyconic projection. 1927 North American datum. 10,000-foot grid based on Montana coordinate system, south zone. 1000-metre Universal Transverse Mercator grid ticks, zone 12, shown in blue.
Red tint indicates areas in which only landmark buildings are shown. Where omitted, land lines have not been established.



ROAD CLASSIFICATION
Heavy-duty ——— Light-duty ———
Medium-duty ——— Unimproved dirt ———
○ Interstate Route □ U.S. Route ○ State Route



BUTTE SOUTH, MONT.
N4545-W11230/15
1961
AMS 3475 I-SERIES V704

THIS MAP COMPLIES WITH NATIONAL MAP ACCURACY STANDARDS
FOR SALE BY U.S. GEOLOGICAL SURVEY, DENVER, COLORADO 80225, OR RESTON, VIRGINIA 22092
A FOLDER DESCRIBING TOPOGRAPHIC MAPS AND SYMBOLS IS AVAILABLE ON REQUEST

10