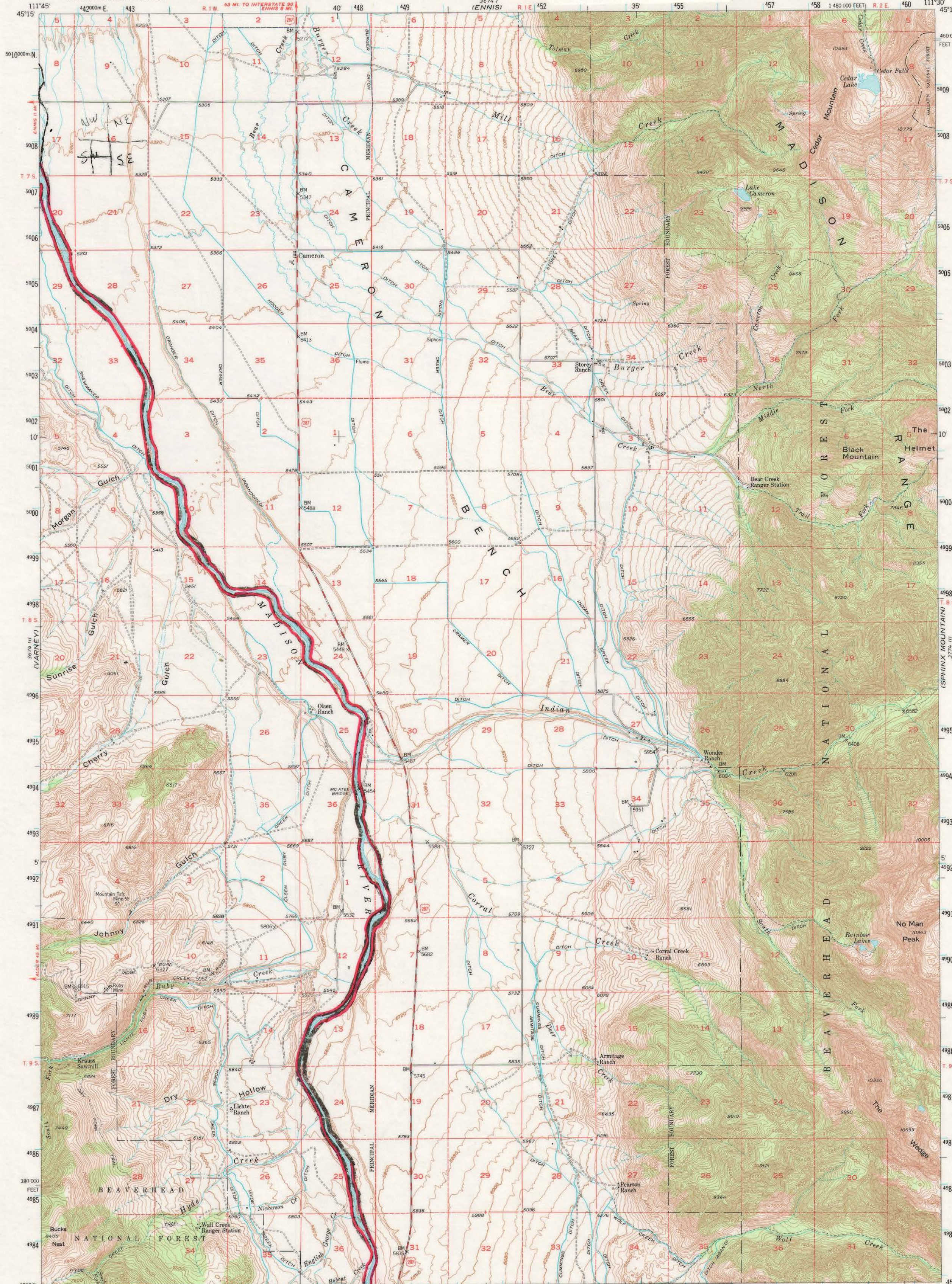


FLOOD PRONE AREAS

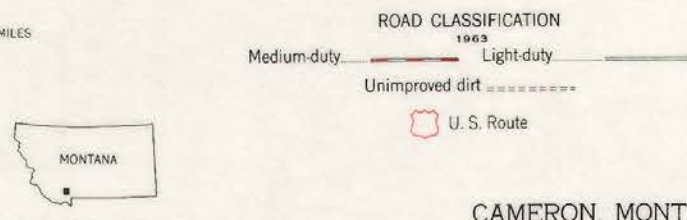
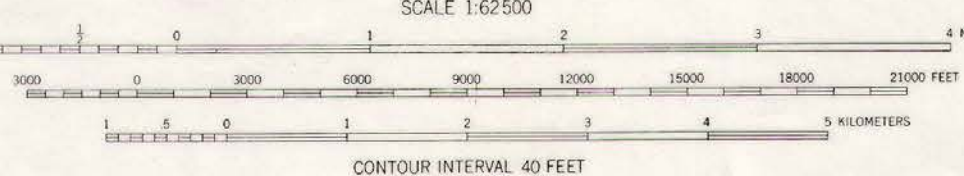
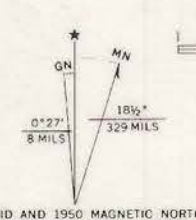
MARCH 10, 1997

UNITED STATES
DEPARTMENT OF THE INTERIOR
GEOLOGICAL SURVEY

CAMERON QUADRANGLE
MONTANA-MADISON CO
15 MINUTE SERIES (TOPOGRAPHIC)



Stereo compilation by Fairchild Aerial Surveys, Inc., for the Bureau of Reclamation. Field examination and publication by the Geological Survey as part of the Department of the Interior program for the development of the Missouri River Basin Control by USGS and USCRS. Topography from aerial photographs by stereoplanograph methods 1948. Aerial photographs taken 1947. Field check 1950. Polyconic projection. 1927 North American datum 10,000-foot grid based on Montana coordinate system, south zone. Dashed land lines indicate approximate locations. Land lines unsurveyed in parts of T.9S.-R.2E., T.9S.-R.1W. and T.7S.-R.2E. Unchecked elevations are shown in brown. 1000-meter Universal Transverse Mercator grid ticks, zone 12, shown in blue.



CAMERON, MONT.
N4500-W1130/15
1950
AMS 3674 II-SERIES V794

11