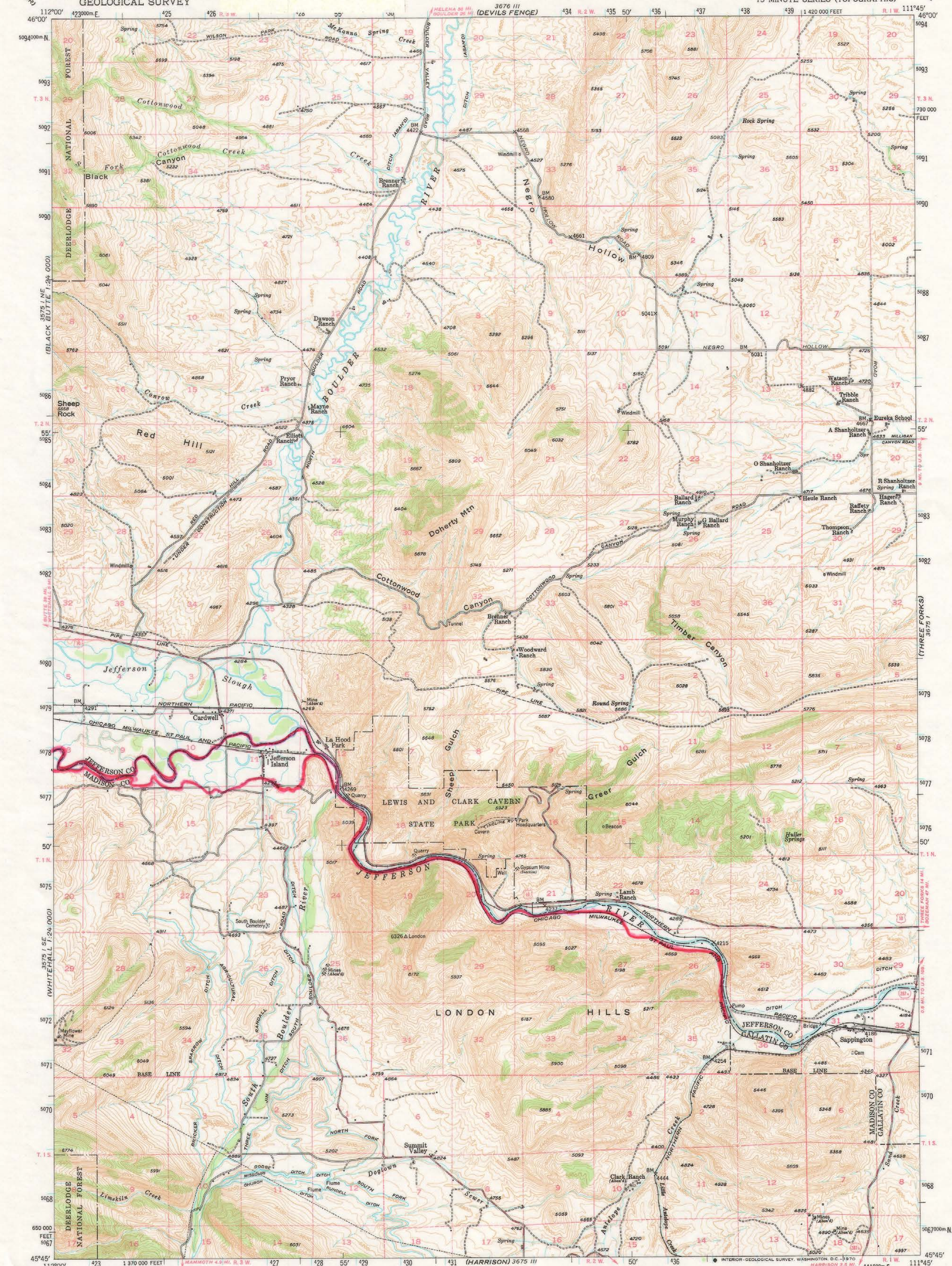


FLOOD PRONE AREAS

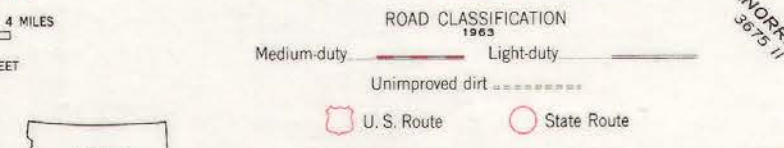
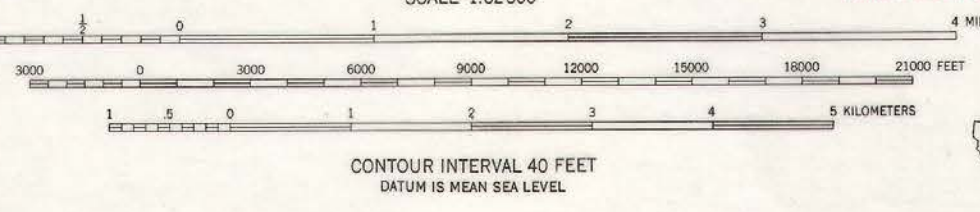
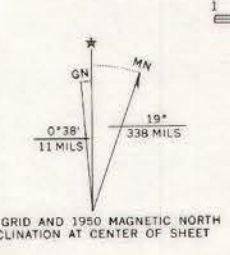
MARCH 10, 1997

UNITED STATES
DEPARTMENT OF THE INTERIOR
GEOLOGICAL SURVEY

JEFFERSON ISLAND QUADRANGLE
MONTANA
15 MINUTE SERIES (TOPOGRAPHIC)



Stereo compilation by Fairchild Aerial Surveys Inc. for the Bureau of Reclamation and publication by the Geological Survey as part of the Department of the Interior program for the development of the Missouri River Basin.
Control by USGS and USC&GS
Topography from aerial photographs by stereoplanigraph methods. Aerial photographs taken 1947
Field check 1950
Polyconic projection. 1927 North American datum
10,000-foot grid based on Montana coordinate system, south zone
Dashed land lines indicate approximate locations
Unchecked elevations are shown in brown
1000-meter Universal Transverse Mercator grid ticks, zone 12, shown in blue



JEFFERSON ISLAND, MONT.
N4545-W11145/15
1950

THIS MAP COMPLIES WITH NATIONAL MAP ACCURACY STANDARDS
FOR SALE BY U.S. GEOLOGICAL SURVEY, DENVER, COLORADO 80225 OR WASHINGTON, D. C. 20242
A FOLDER DESCRIBING TOPOGRAPHIC MAPS AND SYMBOLS IS AVAILABLE ON REQUEST

AMS 3675 IV-SERIES V794