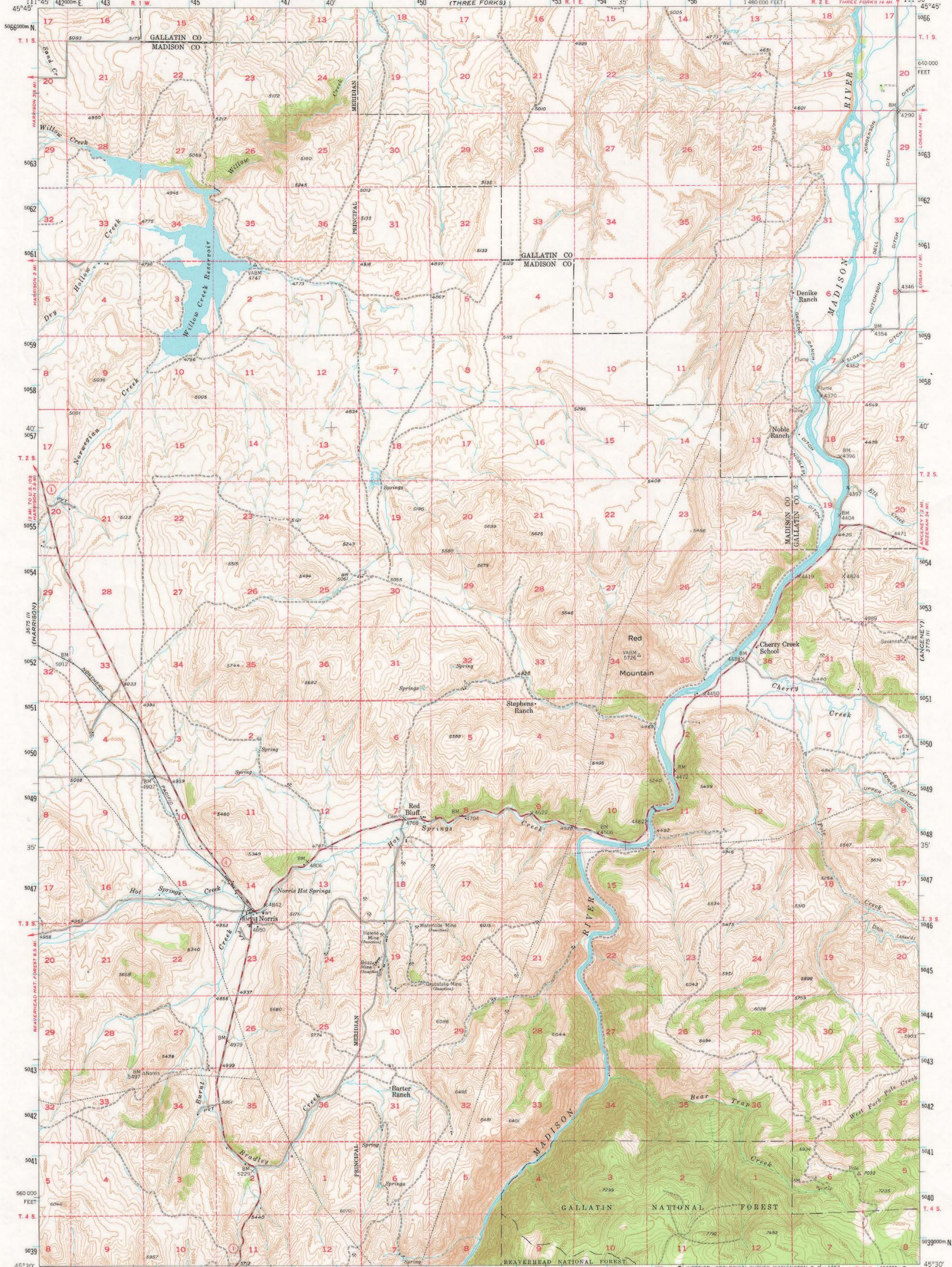
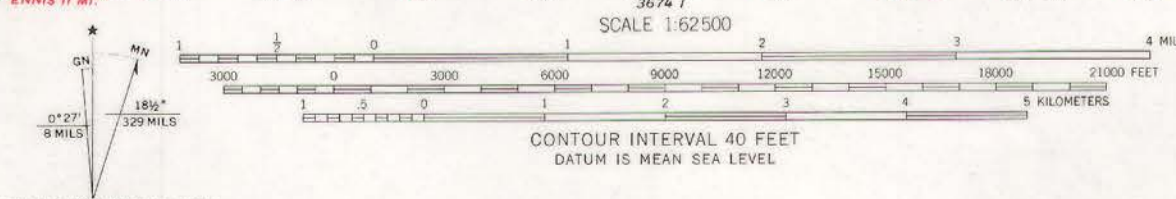


UNITED STATES
DEPARTMENT OF THE INTERIOR
GEOLOGICAL SURVEY

NORRIS QUADRANGLE
MONTANA
15 MINUTE SERIES (TOPOGRAPHIC)



Stereo compilation by Fairchild Aerial Surveys, Inc. for the Bureau of Reclamation. Field checked and published by the Geological Survey as part of the Department of the Interior program for the development of the Missouri River Basin. Control by USGS and USC&GS. Topography from aerial photographs by stereo-planigraph methods. Aerial photographs taken May 1947. Field check, 1949. Polyconic projection. 1927 North American datum. 10,000-foot grid based on Montana coordinate system, south zone. Dashed land lines indicate approximate location. 1000-meter Universal Transverse Mercator grid ticks, zone 12, shown in blue.



ROAD CLASSIFICATION
Medium-duty ——— Light duty ———
Unimproved dirt - - - - - State Route ○

THIS MAP COMPLIES WITH NATIONAL MAP ACCURACY STANDARDS
FOR SALE BY U. S. GEOLOGICAL SURVEY, DENVER, COLORADO 80225 OR WASHINGTON, D. C. 20242
A FOLDER DESCRIBING TOPOGRAPHIC MAPS AND SYMBOLS IS AVAILABLE ON REQUEST

NORRIS, MONT.
N4530-W11130/15
1949
AMS 3675 II—SERIES V794